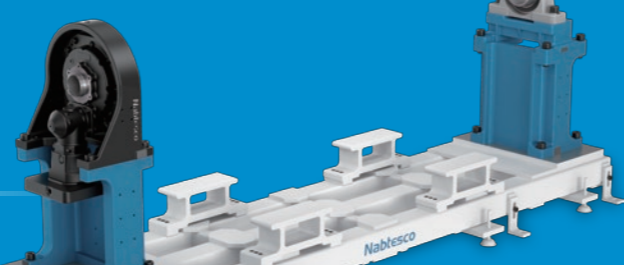
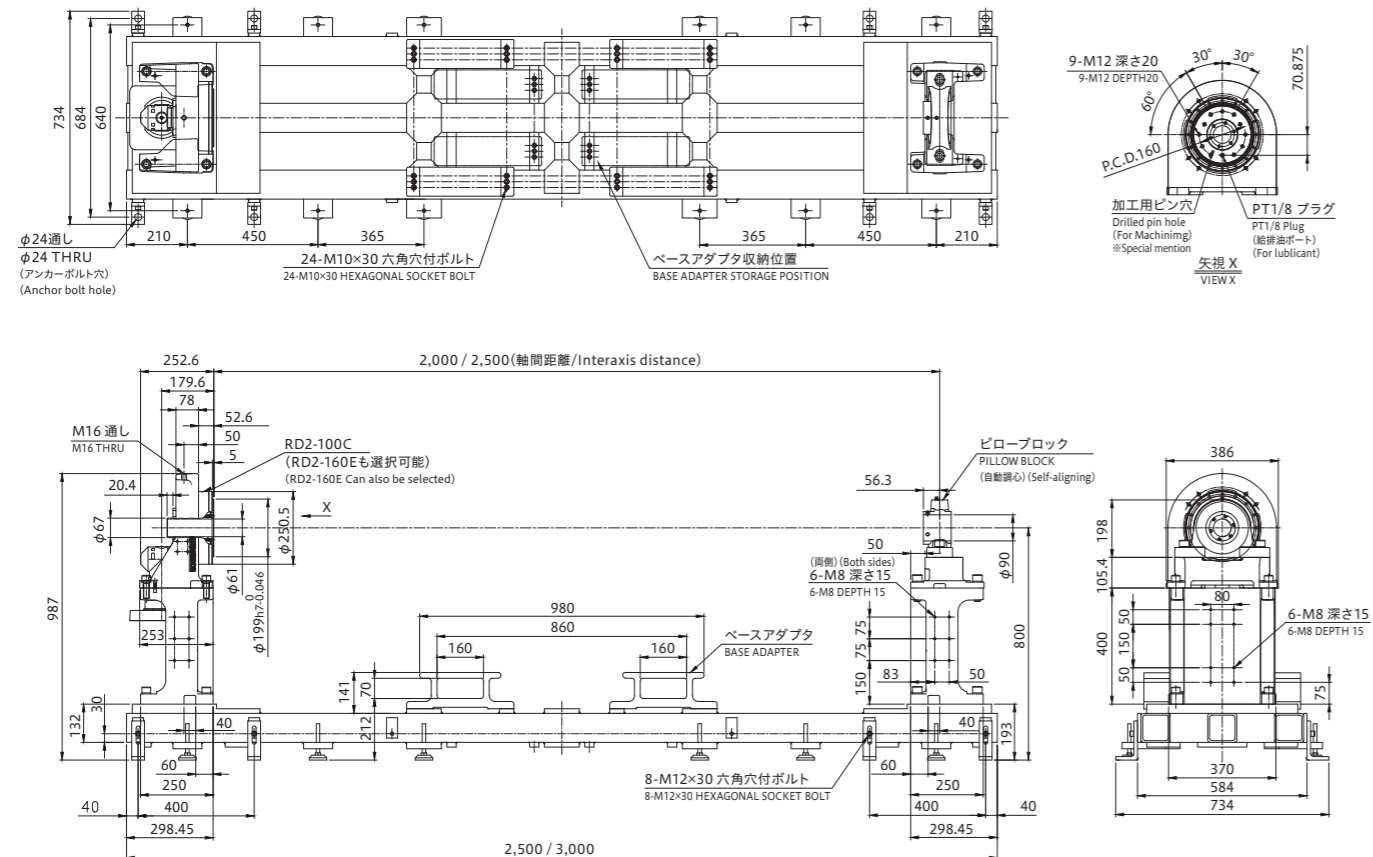


# RVP™

## B Series



### External Dimensions



\* This drawing is for the RD2-100C version. Please contact us for the RD2-160E version.

# RV®

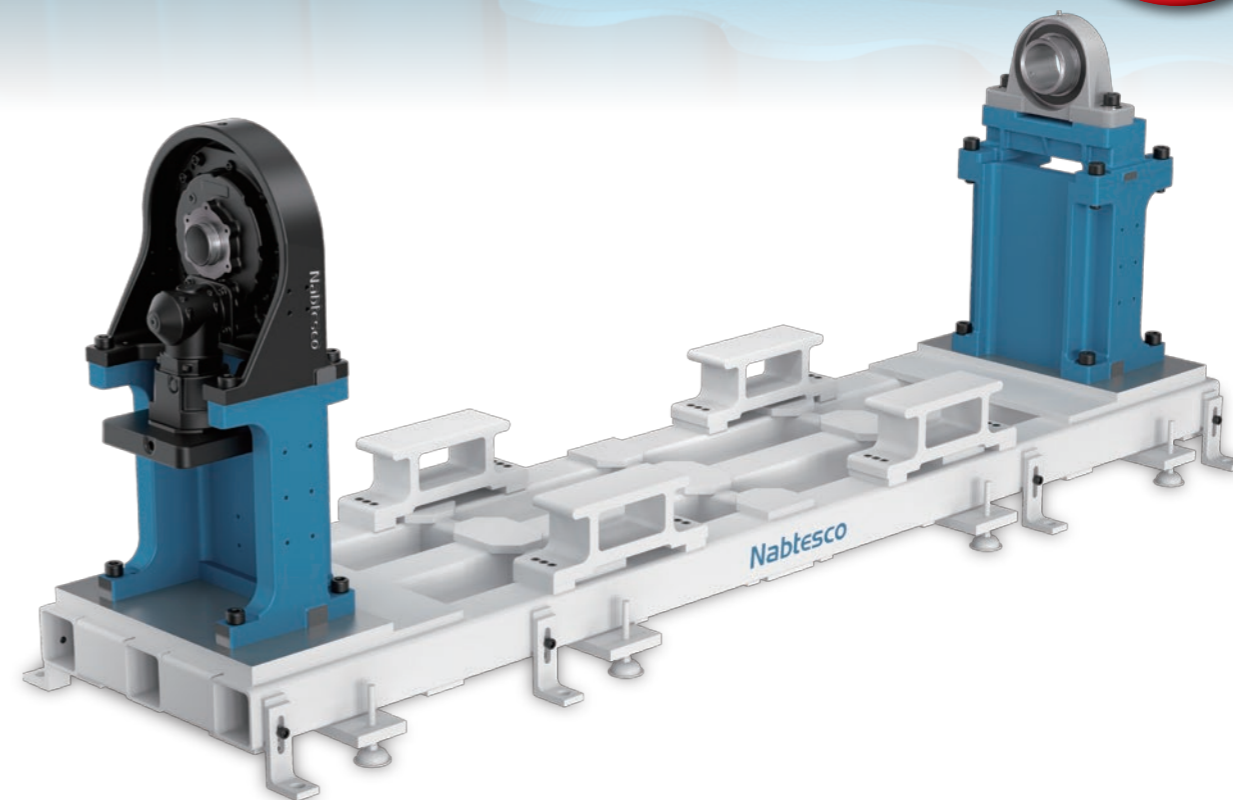
## Precision Reduction Gear RV™

### Gearhead for Positioners

# RVP™

## B Series

**New Product**



# Nabtesco

Nabtesco Corporation

<https://precision.nabtesco.com/>



- Nabtesco, RV and RVP are registered trademarks or trademarks of Nabtesco Corporation.
- Specifications are subject to change without notice.
- Unauthorized reprinting, reproduction, copying, or translation of this catalog in whole or in part is strictly prohibited.

CAT.180425-Rev.001 (Issued on April 25, 2018)



Europe and Africa

Nabtesco Precision Europe GmbH (Düsseldorf, Germany)  
TEL: +49-211-173790 FAX: +49-211-364677  
E-MAIL: info@nabtesco.de

North and South America

Nabtesco Motion Control Inc. (MI, USA)  
TEL: +1-248-553-3020 FAX: +1-248-553-3070  
E-MAIL: engineer@nabtescomotioncontrol.com

India

Nabtesco India Private Limited (Bangalore, India)  
TEL: +91-80-4123-4901 FAX: +91-80-4123-4903

Asia and others

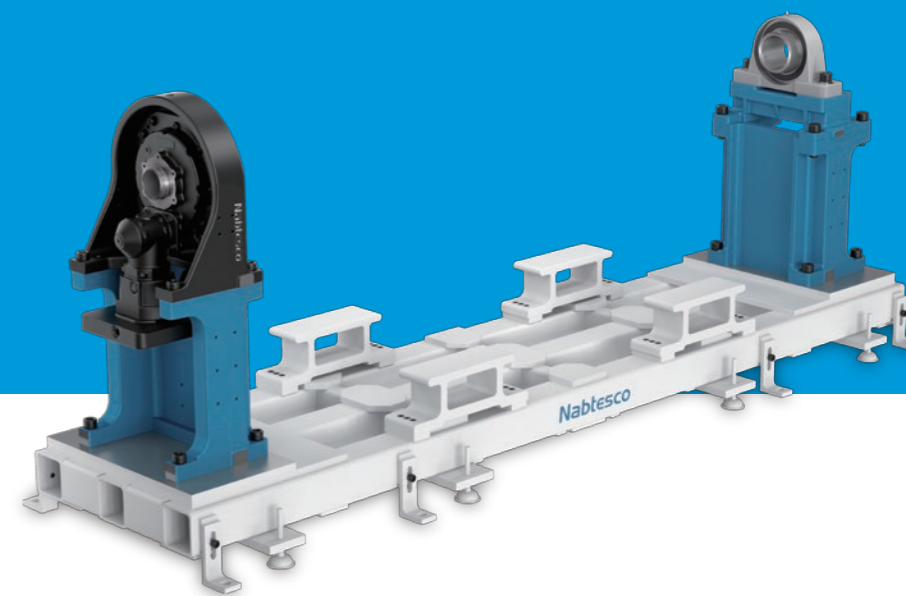
Nabtesco Corporation (Japan)  
Nagoya Office  
TEL: +81-52-582-2981 FAX: +81-52-582-2987

Customer Support Center  
TEL: +81-59-237-4672 FAX: +81-59-237-4697

E-MAIL: P\_Information@nabtesco.com

## New BBQ positioner gearhead kit equipped with the welding positioner industry-proven Precision Reduction Gear RV™

# Nabtesco

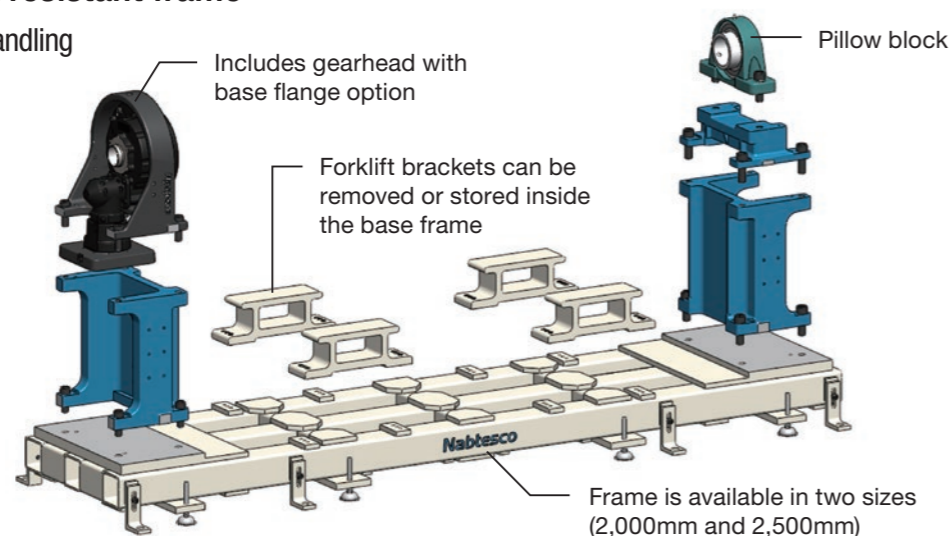
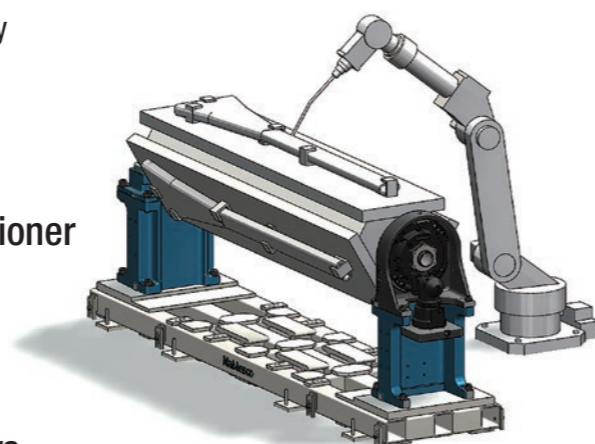


### Features

- **A gearhead utilizing the industrial robot industry-proven Precision Reduction Gear RV™**  
High accuracy, rigidity, and reliability → Improved welding quality
- **No centering alignment necessary**  
Faster setup and assembly time
- **Includes all major parts needed for a BBQ positioner**  
One stop shopping for all major parts simplifies and streamlines procurement  
Reduction of time needed for design and production
- **Support for all major servo motor manufacturers**  
Compatible for collaborative work using many different robots
- **High-rigidity, shock resistant frame**  
Easy transportation and handling

### Application Example

Forklift brackets stored inside base frame



We also offer customized solutions.  
Please contact us for more information.  
(Axis length, height, width, frame shape, etc.. can be customized)



### Specification Table

Model	RVP-B10C		RVP-B10E	
Maximum allowable load	1,000kg			
Maximum center of gravity height	250mm		400mm	
Hollow shaft diameter (Reduction gear)	Ø61		-	
Hollow shaft diameter (Pillow bearing)	Ø90			
Allowable startup/stop torque	2,450Nm		3,920Nm	
Moment of inertia I (I=GD²/4) motor input conversion	8.23×10 <sup>-4</sup> ~2.16×10 <sup>-3</sup> kg-m²		8.94×10 <sup>-4</sup> ~6.68×10 <sup>-3</sup> kg-m²	
Backlash/ RDS, RDP	1 arc.min.			
Lost motion RDR	1.5 arc.min.			
Weight *1	702kg (Frame length 2,500mm) / 665kg (Frame length 2,000mm)		718kg (Frame length 2,500mm) / 681kg (Frame length 2,000mm)	
Reduction ratio	100.5	210	66	121
	150	258	81	145
Allowable output speed	-		101	171
	20rpm (2sec/180deg)			

\*1 This weight does not include the motor flange.

### Center of Gravity Height and Allowable Load Range

\* Loading beyond this range will exceed the startup/stop torque and/or allowable moment of the reduction gear, and may damage the reduction gear.  
\* Loads given are reference values.

