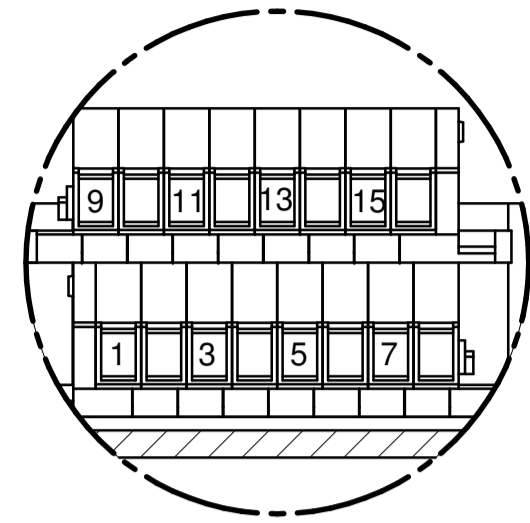
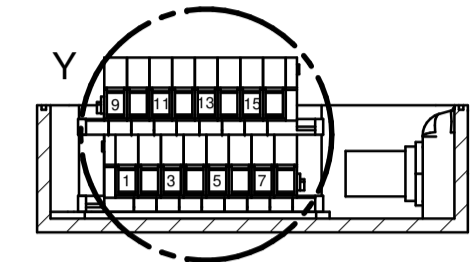


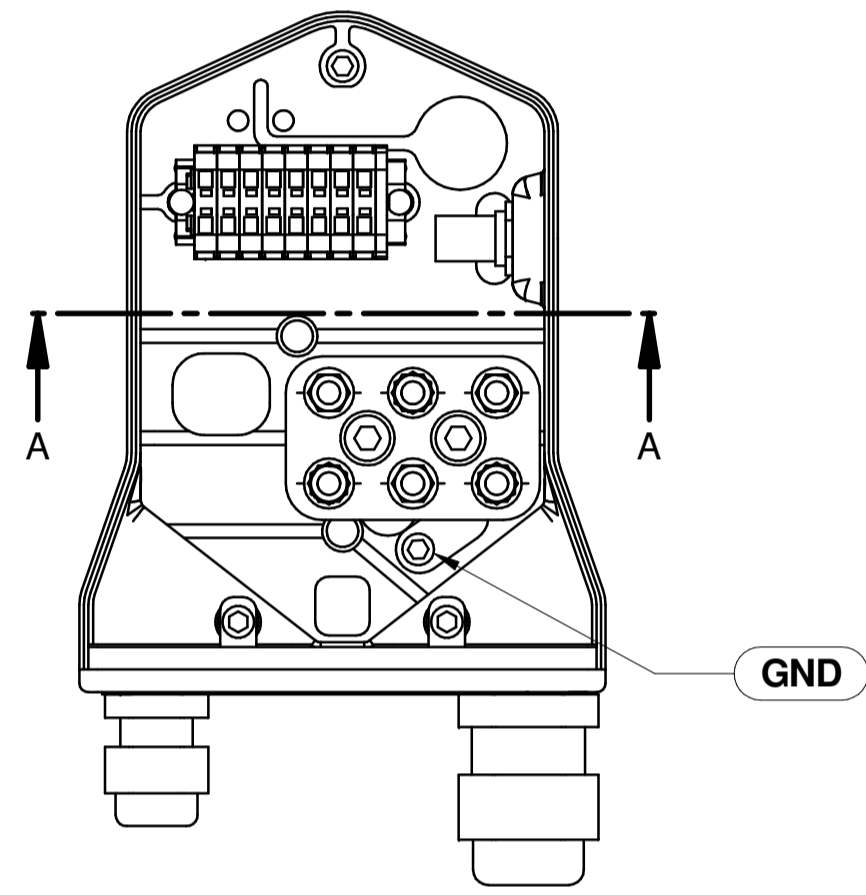
POTENZA - POWER	
DESCRIZIONE - DESCRIPTION	COLORE - COLOR
U - PHASE MOTOR	NERO-BLACK
V - PHASE MOTOR	BLU-BLUE
W - PHASE MOTOR	MARRONE - BROWN
GND	GIALLO/VERDE-YELLOW/GREEN



DETTAGLIO Y



SEZIONE A-A

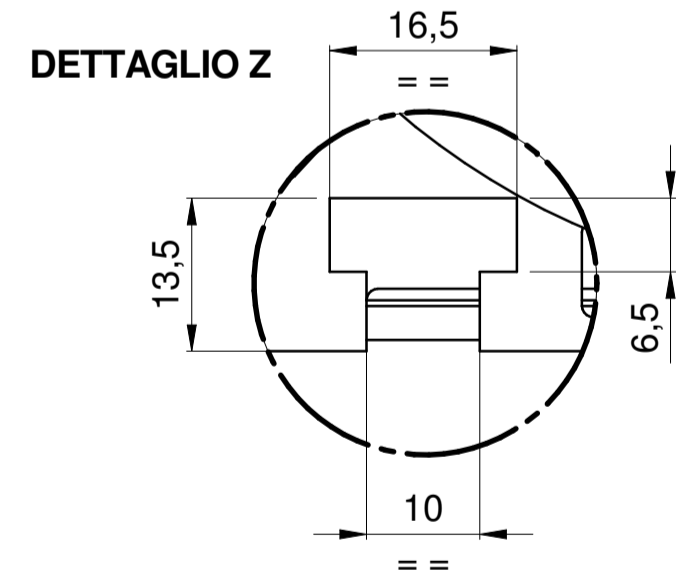
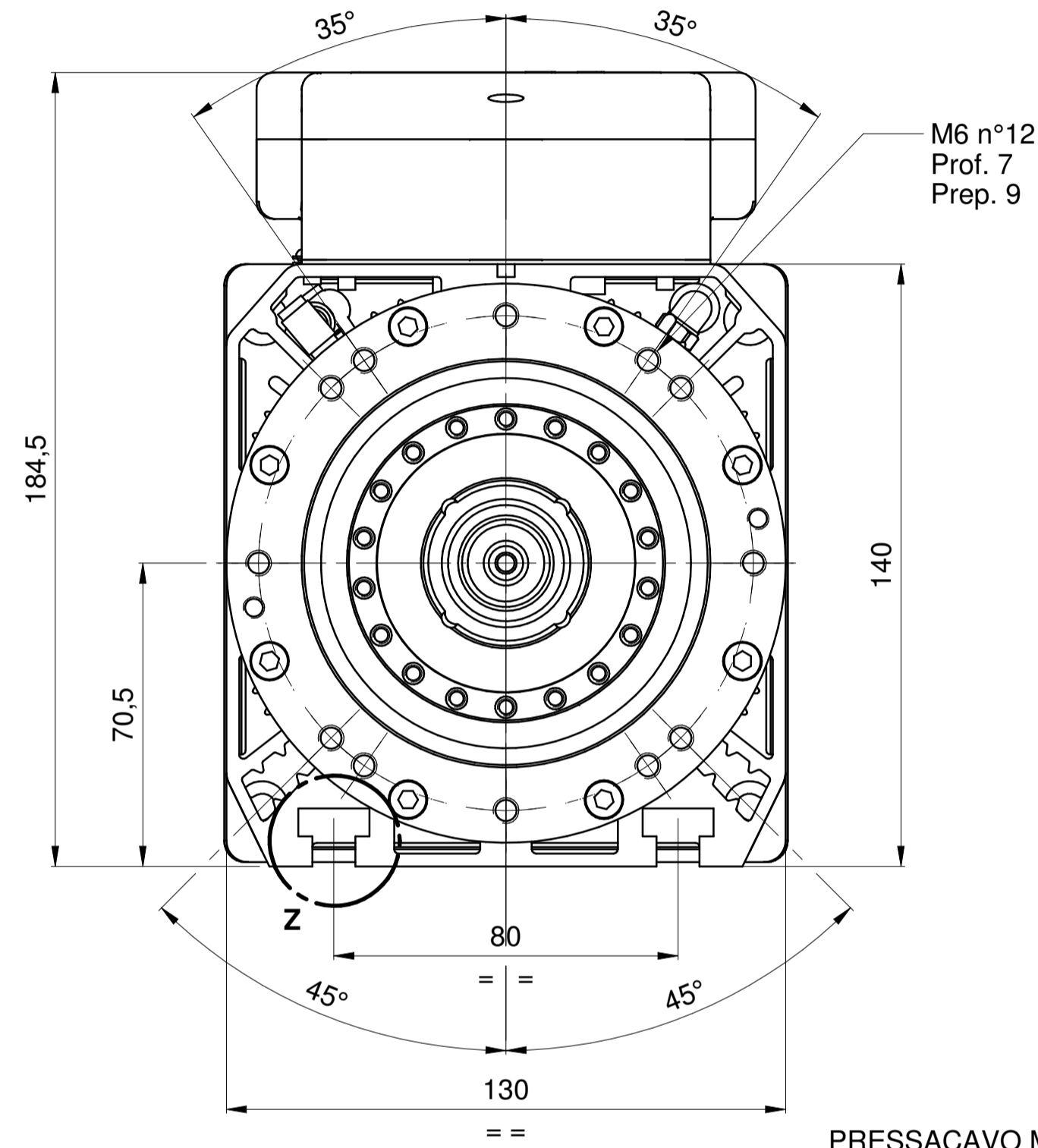
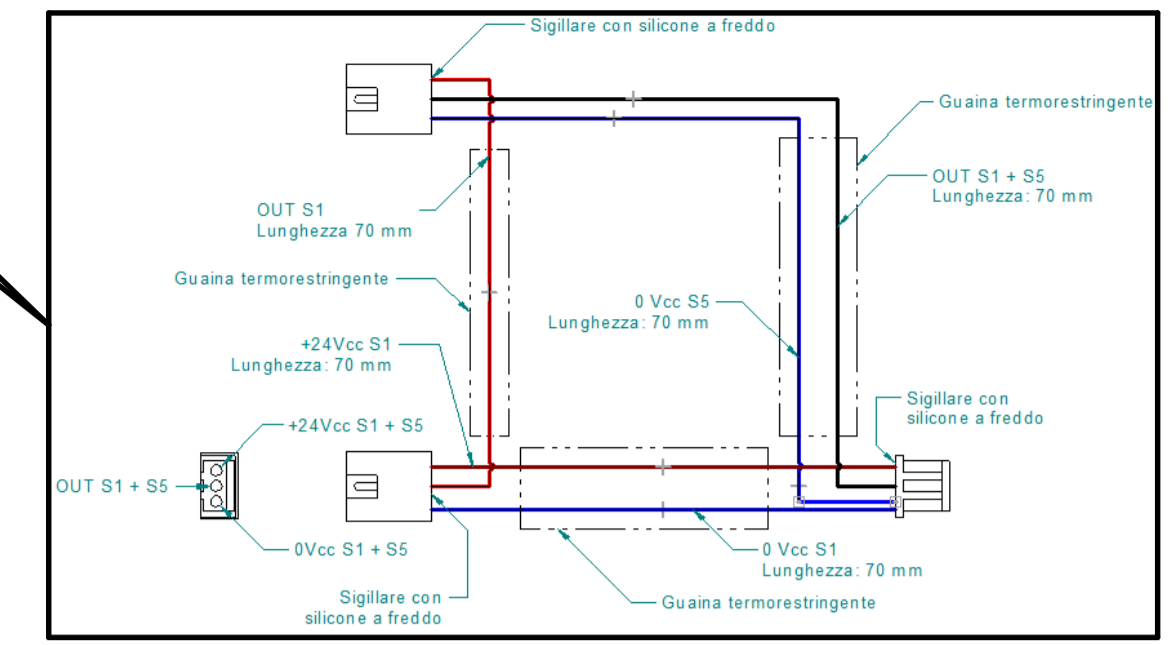


NOTA:
DURANTE LA CABLATURA DELL'ELETTROMANDRINO
SERRARE LO SCHERMO DEL CAVO DI POTENZA
E DI SEGNALE MEDIANTE I PRESSACAVI EMC

NOTE:
DURING THE CABLING OF SPINDLE
TIGHTEN THE SHIELD OF POWER AND SIGNAL CABLE
THROUGH METALLIC GLAND EMC

SEGNALE - SIGNAL		
ID	DESCRIZIONE - DESCRIPTION	COLORE - COLOR
1	0 Vcc - ALIM. S1 + S5 - SUPPLY S1 + S5	BLU-BLUE S1 + BLU-BLUE S5
2	OUTPUT S1 + S5 - UTENS. AFFERRATO/TOOL LOCKED	NERO-BLACK S1 + NERO-BLACK S5
3	+24 Vcc ALIM. S1 - SUPPLY S1	MARRONE - BROWN
4	0 V - ALIM. S2 - SUPPLY S2	BLU-BLUE
5	OUTPUT S2 - UTENSILE SBLOCCATO/TOOL RELEASED	NERO-BLACK
6	+24 Vcc ALIM. S2 - SUPPLY S2	MARRONE - BROWN
7	SONDA TERMICA - THERMOSWITCH	BIANCO - WHITE
8	SONDA TERMICA - THERMOSWITCH	BIANCO - WHITE
9	0 V - ALIM. S3 - SUPPLY S3	BLU-BLUE
10	OUTPUT S3 - ALBERO FERMO /SHAFT STANDSTILL	NERO-BLACK
11	+24 Vcc ALIM. S3 - SUPPLY S3	MARRONE - BROWN
12	PULSANTE C.U. - T.C. BUTTON	NERO-BLACK
13	PULSANTE C.U. - T.C. BUTTON	NERO-BLACK
14	N.C.	-
15	N.C.	-
16	N.C.	-

N.C.= NON COLLEGATO/NOT CONNECTED



DETTAGLIO Z

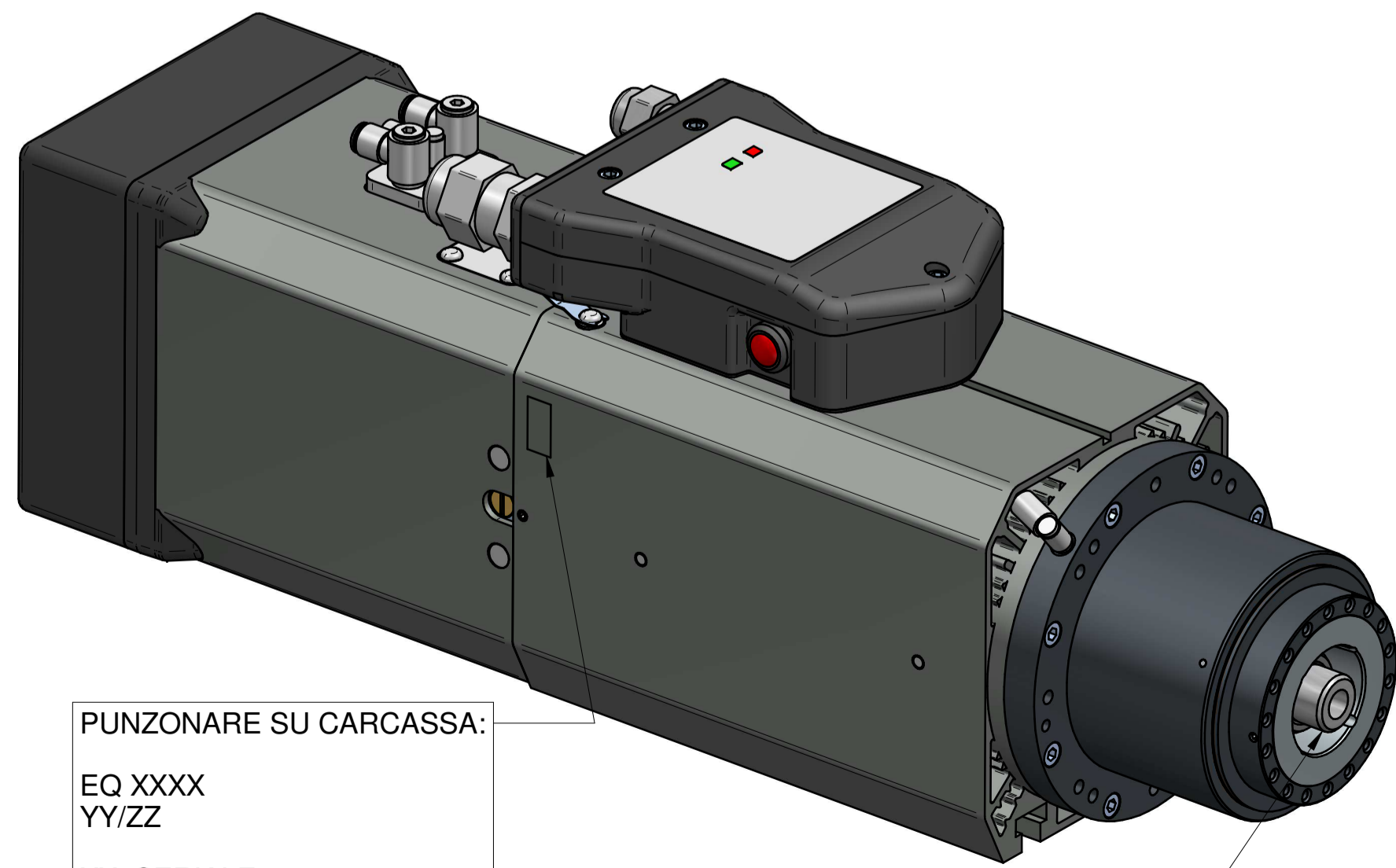
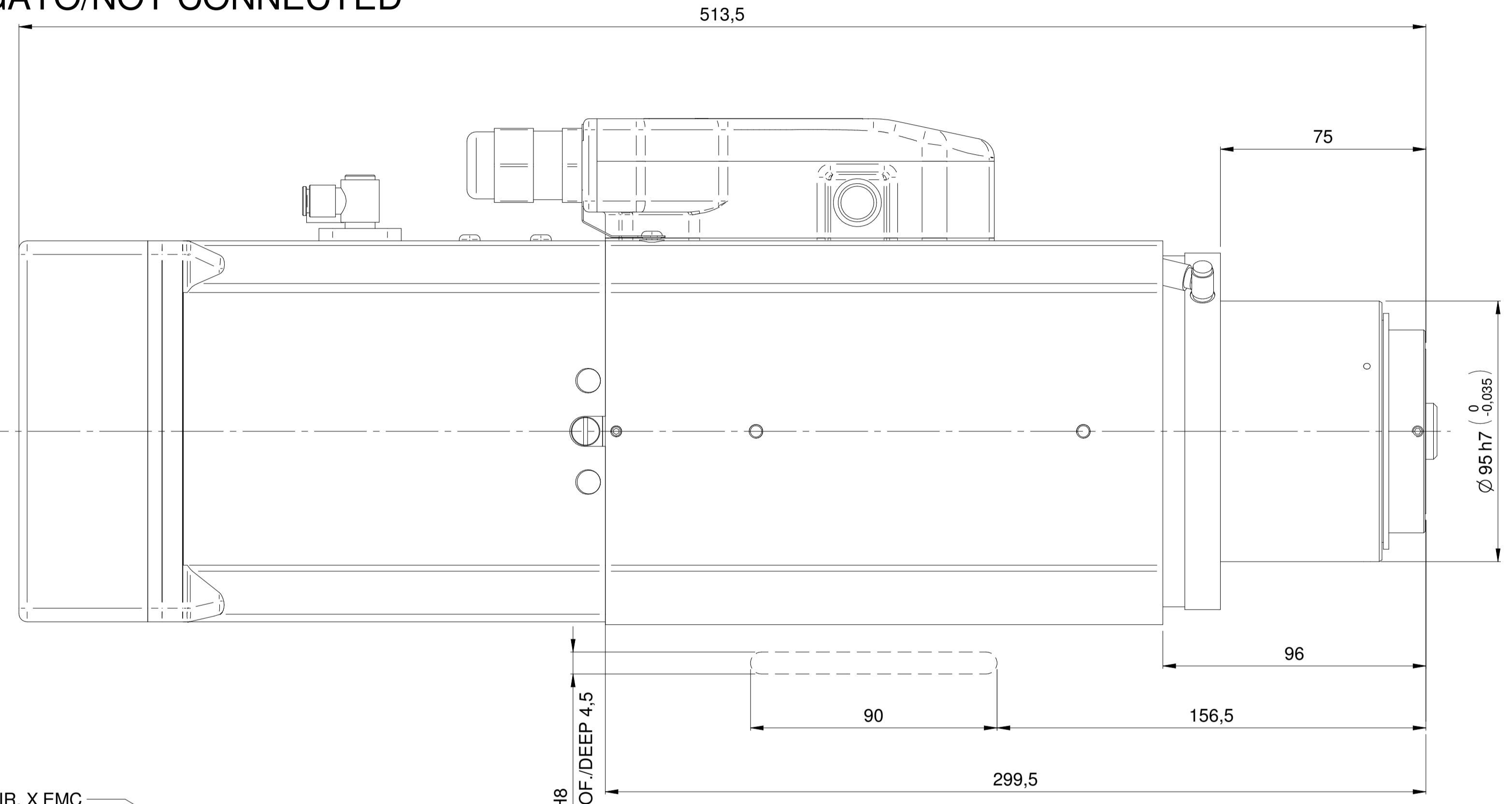
PRESSACAVO MET.M16 DIR. X EMC
METALLIC GLAND M16 STRAIGHT FOR EMC

SOFFIO CONO: E6 ARIA SECCA 6 ÷ 6.5 bar
TAPER CLEANING: E6 AIR DRY 6 ÷ 6.5 bar

BLOCCO UTENSILE: E4 ARIA SECCA 6 ÷ 6.5 bar
LOCK TOOL: E4 AIR DRY 6 ÷ 6.5 bar

SBLOCCO UTENSILE: E6 ARIA SECCA 6 ÷ 6.5 bar
RELEASE TOOL: E6 AIR DRY 6 ÷ 6.5 bar

PRESSACAVO MET.M25 DIR. X EMC
METALLIC GLAND M25 STRAIGHT FOR EMC



PUNZONARE SU CARCASSA:

EQ XXXX
YY/ZZ

XX=SERIALE
YY=MESE DI PRODUZIONE
ZZ=ANNO DI PRODUZIONE

ATTACCO HSK 63F
TOOL INTERFACE HSK 63F
DIN 69893-6

MASSA MASS: 24 Kg

02	10/07/2019	L.Perrotti	Da 29L0151231E a 29L0142212D - Inser.29L0385664G - Mod. Schemi	CN25528
01	25/06/2018	C.Napa	Ininfluente (agg modello e tavola)	
Rev / Data / Date	Firma / Signature	Descrizione ultima modifica / Last change description	N° Modifica / Change ID	
<small>Caratteristiche tecniche non evidenziate secondo specifica SCM GROUP: 10 25 1010 <small>Specificazioni per disegno secondo ISO 2835: 10 25 1010 <small>Spazio riservato secondo specific SCM: 10 25 1010 <small>Dimensione senza indicazione di tolleranza, grado di precisione <small>Dimensione without indication of tolerance, accuracy</small></small></small></small></small>				<small>Verficatura / Painting (SCM specific ST231DTG)</small> VER000 <small>Trattamento Superficiale / Surface Treatment (SCM specifications ST234DTG)</small>
<small>Ultimo rilascio / Latest release</small>				<small>Trattamento Termico / Heat Treatment (SCM specifications ST234DTG)</small>
<small>Controllato / Checked by</small>				<small>Ricavare da o Stato di fornitura / Based on or State of supply</small>
<small>Disegnato / Designed by</small>				<small>Massa / Mass (kg)</small> CF1 <small>Smussi / chamfer</small> 0 <small>Massa / Mass (kg)</small> 11416,642
<small>Denominazione / Item Name</small> ELETM QE-1F 7.5/6 24 63F NC CB DV				<small>Materiale / Material (SCM specifications ST235DTG)</small> Vedi Tabella
<small>Scala / Scale</small> 1:1,3				<small>Codice / Item ID</small> 29L0385638C
<small>Rev</small> 02				<small>Status</small> 02
<small>Tav. N. of N.</small> 3/3				



HITECO HIGH TECHNOLOGY COMPONENTS