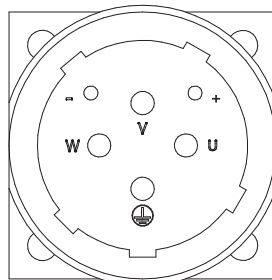
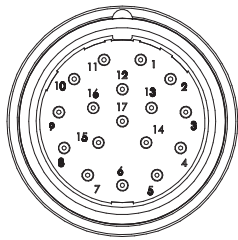
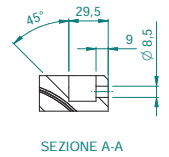
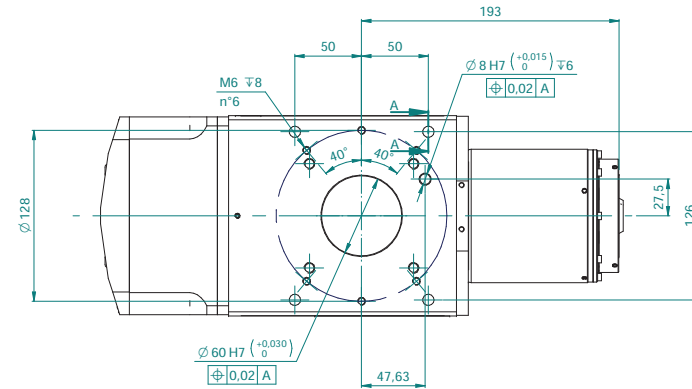
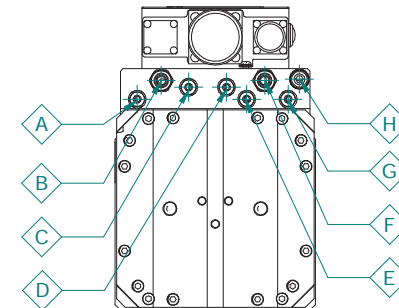
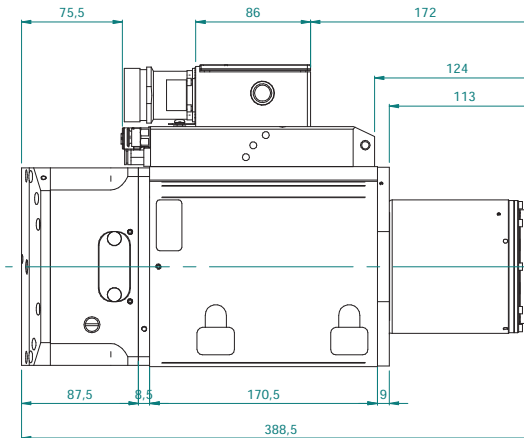
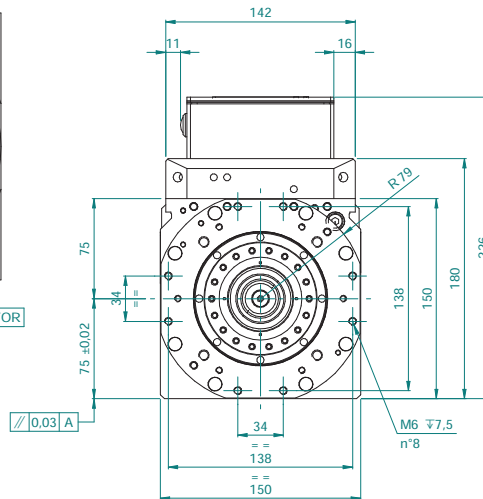


ATTACCO HSK 63E
TOOL INTERFACE HSK 63E
DIN69893-5



CONNETTORE SEGNALE I/O - SIGNAL I/O CONNECTOR

CONNETTORE POTENZA - POWER CONNECTOR



| REF | DESCRIZIONE | COLORE | SEZIONE |
|-----|------------------------------------|-----------------------------|---------|
| U | U - FASE MOTORE - MOTOR PHASE | NERO - BLACK | 2.5mm |
| V | V - FASE MOTORE - MOTOR PHASE | BLU - BLUE | 2.5mm |
| W | W - FASE MOTORE - MOTOR PHASE | MARRONE - BROWN | 2.5mm |
| GND | GND | GIALLO-VERDE - YELLOW-GREEN | 2.5mm |
| - | S.TEMP. P1100 - P1100 TEMP. SENSOR | BIANCO - WHITE | 0.2mm |
| + | S.TEMP. P1100 - P1100 TEMP. SENSOR | ROSSO - RED | 0.2mm |

| REF | DESCRIZIONE | TUBO | DATI |
|-----|---|------------------|----------------|
| A | UTENZA PNEUM./IDRAUL. 3 - AIR/HYDRAULIC INLET 3 | $\varnothing 6$ | 6 - 6.5 bar |
| B | INGRESSO/USCITA LIQUIDI DI RAFFREDDAMENTO ELETM. - IN/OUT LIQUID COOLING ELECTROSPINDLE | $\varnothing 10$ | 4.5 l/min |
| C | UTENZA PNEUM./IDRAUL. 1 - AIR/HYDRAULIC INLET 1 | $\varnothing 6$ | 6 - 6.5 bar |
| D | UTENZA PNEUM./IDRAUL. 2 - AIR/HYDRAULIC INLET 2 | $\varnothing 6$ | 6 - 6.5 bar |
| E | UTENZA PNEUM./IDRAUL. 4 - AIR/HYDRAULIC INLET 4 | $\varnothing 6$ | 6 - 6.5 bar |
| F | INGRESSO/USCITA LIQUIDI DI RAFFREDDAMENTO ELETM. - IN/OUT LIQUID COOLING ELECTROSPINDLE | $\varnothing 10$ | 4.5 l/min |
| G | SOFFIO LONDI / PRESSURIZZAZIONE - TAPER CLEANING / PRESSURIZATION | $\varnothing 6$ | 4 - 4.5 bar |
| H | Sblocco - RELEASE TOOL | $\varnothing 8$ | 9.5 - 10.5 bar |

| PN | DESCRIZIONE - DESCRIPTION | COLORE - COLOR | Sez. |
|----|--|---|----------|
| 1 | N.C. | - | 0,14 mmq |
| 2 | N.C. | - | 0,14 mmq |
| 3 | +24 Vcc ALIM. S3 - SUPPLY S3 | BLU - BLUE | 0,14mmq |
| 4 | 0 Vcc ALIM. S3 - SUPPLY S3 | NERO - BLACK | 0,14mmq |
| 5 | OUTPUT S1 - UTENSILE AFFERRATO - TOOL LOCKED | MARRONE - BROWN | 0,14mmq |
| 6 | OUTPUT S2 - UTENSILE SBLOCCATO - TOOL RELEASED | VIOLEA - VIOLET | 0,14mmq |
| 7 | OUTPUT S3 - ROTAZIONE ALBERO - SHAFT ROTATION | ROSSO - RED | 0,14mmq |
| 8 | 0 V - ALIM. S1-S2-S5 - SUPPLY S1-S2-S5 | VERDE + ROSA + GRIGIO/ROSA - GREEN + PINK + GRAY/PINK | 0,14mmq |
| 9 | +24 Vcc ALIM. S1-S2-S5 - SUPPLY S1-S2-S5 | BIANCO + GIALLO-ROSSO/BLU - WHITE + YELLOW + RED/BLUE | 0,14mmq |
| 10 | OUTPUT S5 - RITORNO PISTONE - PISTON BACK | GRIGIO - GRAY | 0,14mmq |
| 11 | OUTPUT SONDA TERMICA - THERMAL ALARM | BIANCO - WHITE | 0,14mmq |
| 12 | N.C. | - | - |
| 13 | +24V SONDA TERMICA + PULSANTE C.U. - THERMAL ALARM + T.C. BUTTON | NERO - BIANCO - BLACK + WHITE | 0,14mmq |
| 14 | OUTPUT PULSANTE C.U. - T.C. BUTTON | NERO - BLACK | 0,14mmq |
| 15 | N.C. | - | - |
| 16 | N.C. | - | - |
| 17 | N.C. | - | - |

N.C. = NON COLLEGATO - NOT CONNECTED

