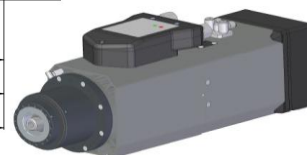
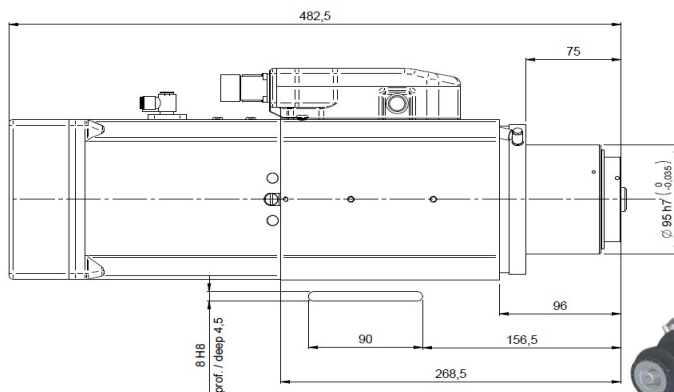
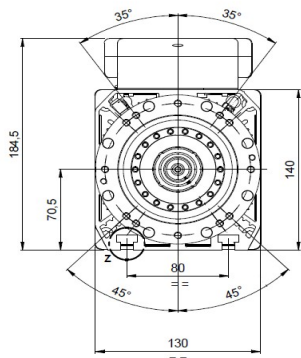


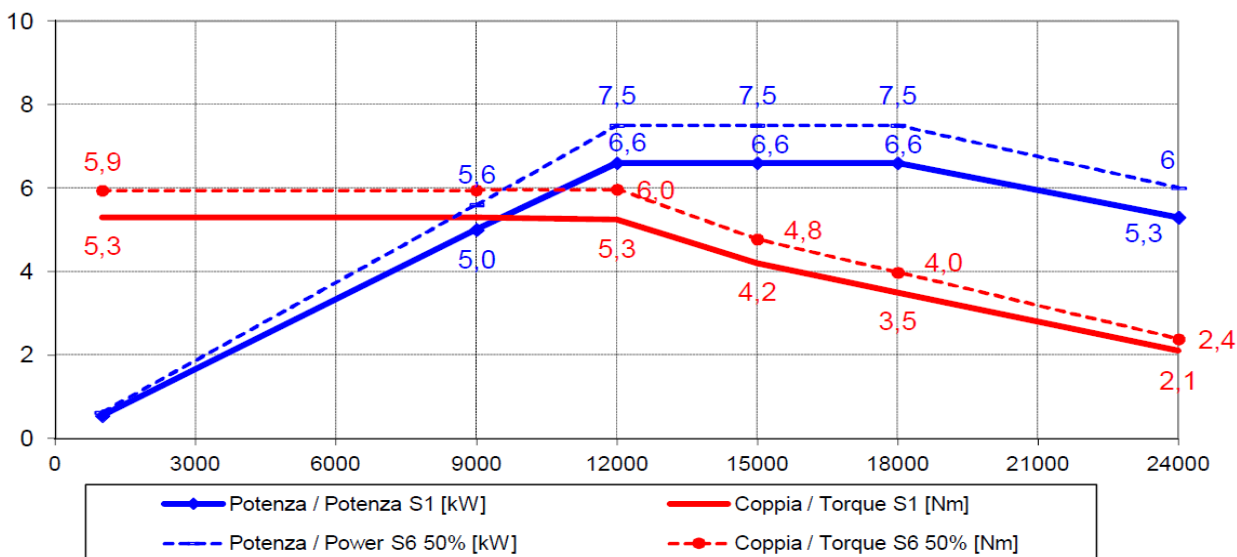


**Electrospindle ATC 6.6Kw 24.000 rpm**  
**QE-1F 6.6/12 24 63F NC CC**

QE.000.L01



**Prestazioni - Performances**



**Specifiche tecniche/ Technical Specifications**

**Tipologia elettromandrino / Electrospindle type**

**Attacco utensile / Tool interface**

**Velocità rotazione max / Max speed**

**Raffreddamento / cooling**

**Cuscinetti / Ball bearings**

**Lubrificazione cuscinetti / Bearings lubrication**

**Connessione pneumatiche / Pneumatic connection**

**Potenza max. (S1 - S6) / Max. Power.(S1 - S6)**

**Coppia max. (S1 - S6) / Max. Torque (S1 - S6)**

**Corrente (S1 - S6) / Current (S1 - S6)**

**Tensione / Voltage**

**Rotazione / Rotation**

**Azionamento / Supply**

**Sensoristica / Sensors**

**Peso / Weight**

Asincrono-4 poli / Synchronous-4poles

HSK 63F

24000 rpm

Aria con elettroventola 24V DC / Air by electrofan 24V DC

Ceramici / Ceramic

Grasso a vita / Grease long life

Sblocco uten. / Release. tool: E6 6÷6.5 bar

Pressurizzazione / Air seal. E6 6÷6.5 bar

Soffio cono-aria utensile / Taper cleaning-air tool E4 6÷6.5 bar

6.6 kW @ 12000 Rpm (S1) / 7.5 kW @ 12000 Rpm (S6)

5.3 Nm (S1) / 6 Nm (S6)

14.5 A (S1) / 16 A (S6)

400 V

CW - CCW

Con inverter / By inverter

S1 Afferraggio utensile / S1 Tool lock

S2 Pinza aperta / S2 Open clamp

S3 Rotazione albero / S3 Spindle rotation

23 kg