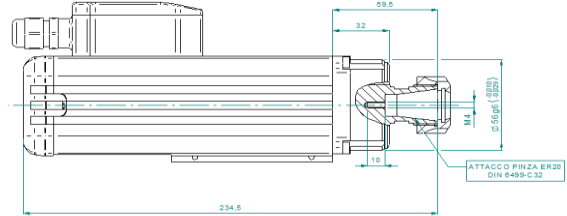
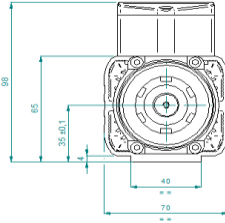
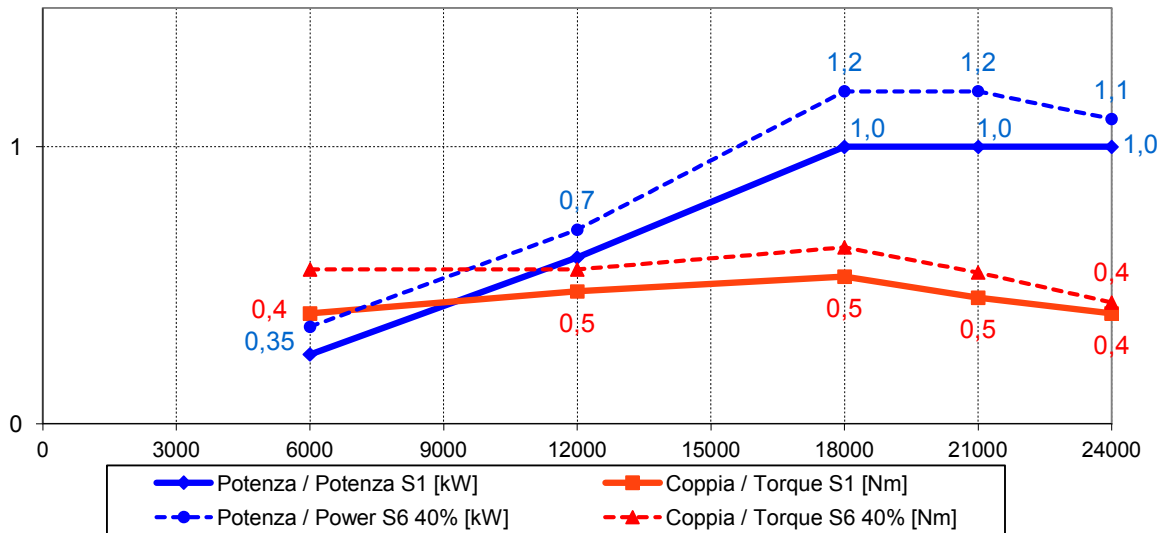




## Electrospindle 1kW 18000 rpm XS-1 1/18 24 ER20 DX BT



### Prestazioni - Performances



### Specifiche tecniche/ Technical Specifications

Tipologia elettromandrino / Electrospindle type

Attacco utensile / Tool interface

Velocità rotazione max / Max speed

Raffreddamento / cooling

Cuscinetto Anteriore / Frontal Ball bearing

Lubrificazione cuscinetti / Bearings lubrication

Potenza max. (S1 - S6) / Max. Power.(S1 - S6)

Coppia max. (S1 - S6) / Max. Torque (S1 - S6)

Corrente (S1 - S6) / Current (S1 - S6)

Tensione / Voltage

Rotazione / Rotation

Azionamento / Supply

Peso / Weight

Asincrono-2 poli / Asynchronous-2 poles

ER20 DX

24000 rpm

Ventola calettata / air by fan on the shaft

Obliquo ad alta velocità  
alta precisione /

High speed high precision  
angular contact ball bearing

Grasso a vita / Grease long life

1 kW @ 18000 rpm (S1) / 1,2 kW @ 18000 rpm (S6)

0,5 Nm (S1) 0,6 Nm (S6)

3 A (S1) / 3,5 A (S6)

220V/380 V

CW

Con inverter / By inverter

3 kg