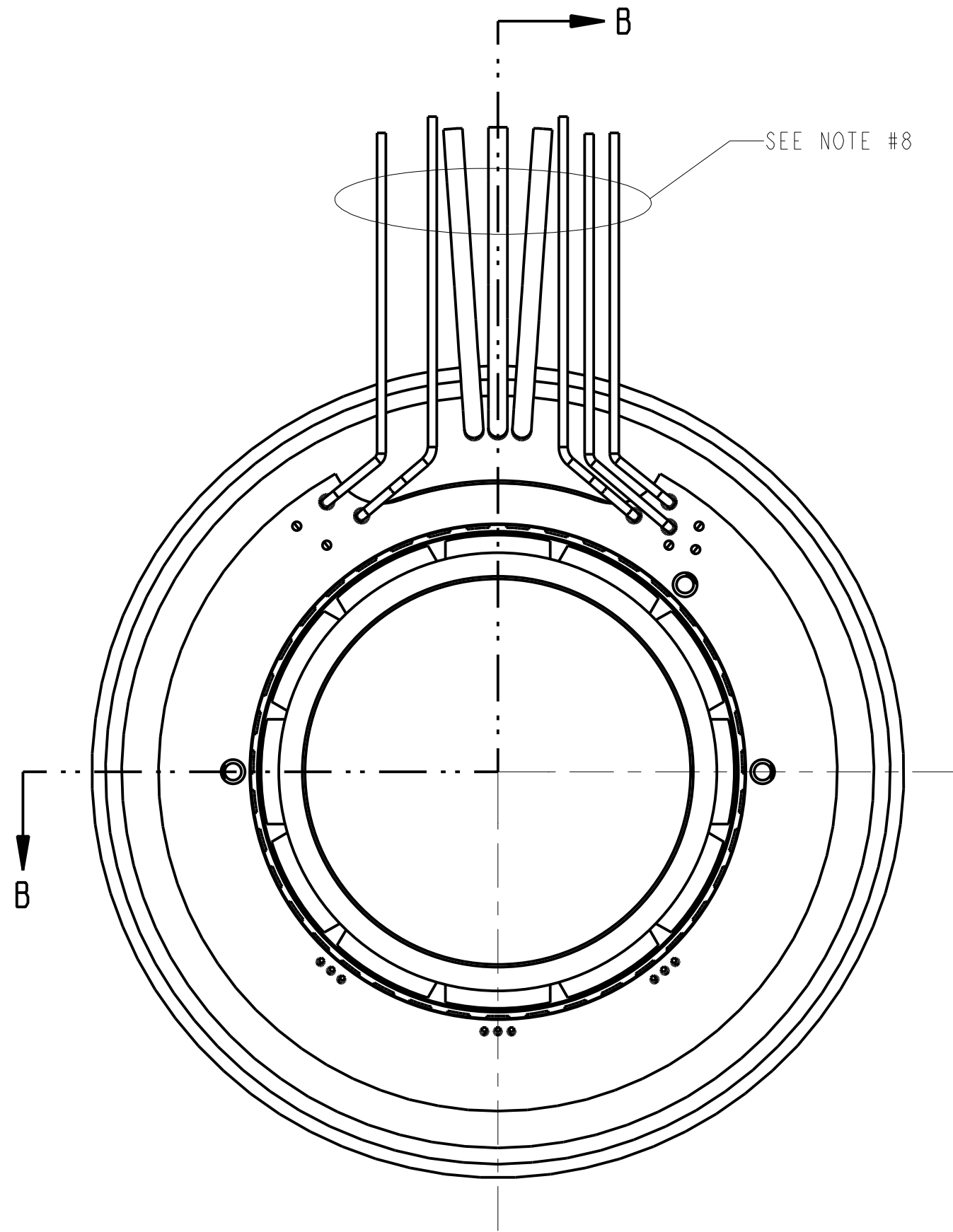
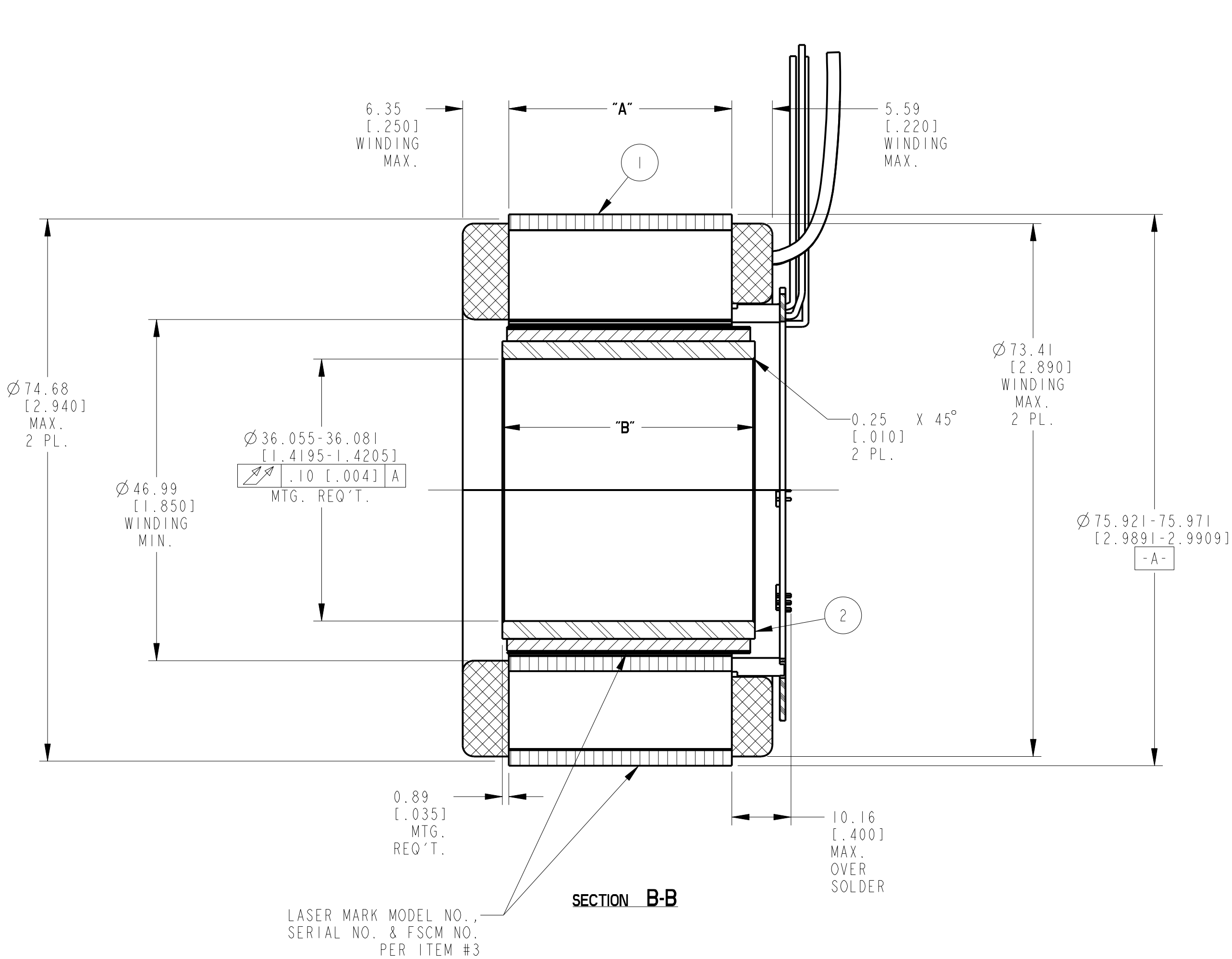


NOTES:  
1. MOTOR SUPPLIED AS TWO SEPARATE COMPONENTS:  
ARMATURE & SENSOR ASSEMBLY AND FIELD ASSEMBLY  
2. FOR A C.W. ROTATION, AS VIEWED FROM LEAD END,  
ENERGIZE PER EXCITATION SEQUENCE TABLE.  
3. R= 1.5K OHMS APPROX. (CUSTOMER SUPPLIED)  
4. V-AB, V-BC AND V-CA IS BACK EMF OF MOTOR PHASES  
AB, BC AND CA RESPECTIVELY, ALIGNED WITH SENSOR  
OUTPUT AS SHOWN FOR C.W. ROTATION ONLY.  
5. MOUNTING SURFACE IS BETWEEN Ø74.68 [2.940] AND Ø75.95 [2.990] ON BOTH SIDES.  
6. SENSORS SET FOR BI-DIRECTIONAL ROTATION.  
7. DIMENSIONS IN BRACKETS [ ] ARE IN INCHES AND ARE FOR REFERENCE ONLY.  
8. MIN. BEND RADIUS FOR MOTOR LEADS IS 6.90 [1.27].  
MIN. BEND RADIUS FOR SENSOR LEADS IS 3.90 [1.15].

MOTOR LEADS:  
#18 AWG TEFLON, COATED, PER  
MIL-W-22759/11, 3 LEADS, 400 mm [15.75"] MIN.  
LONG EACH, 1-RED, 1-WHITE & 1-BLACK  
  
SENSOR LEADS:  
#26 AWG, TYPE "ET", TEFLON, COATED PER  
MIL-W-16878, 5 LEADS, 400 mm [15.75"] MIN. LONG EACH,  
1-BLUE, 1-BROWN, 1-GREEN, 1-ORANGE & 1-YELLOW

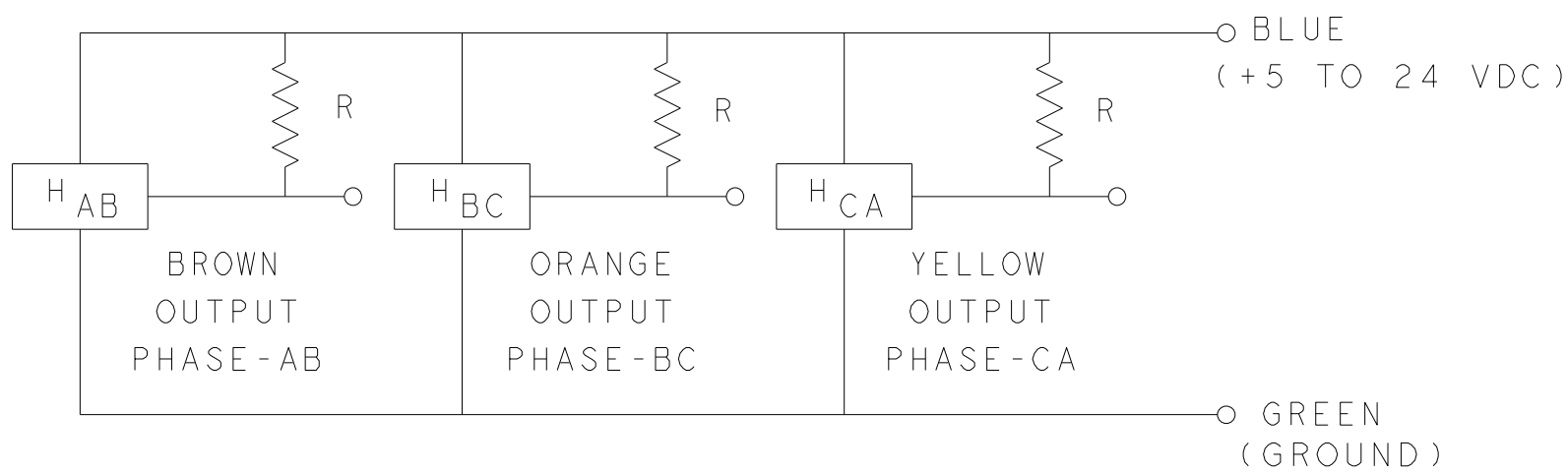


MOTOR WIRING DIAGRAM	
PHASE "A"	RED LEAD
PHASE "B"	WHITE LEAD
PHASE "C"	BLACK LEAD

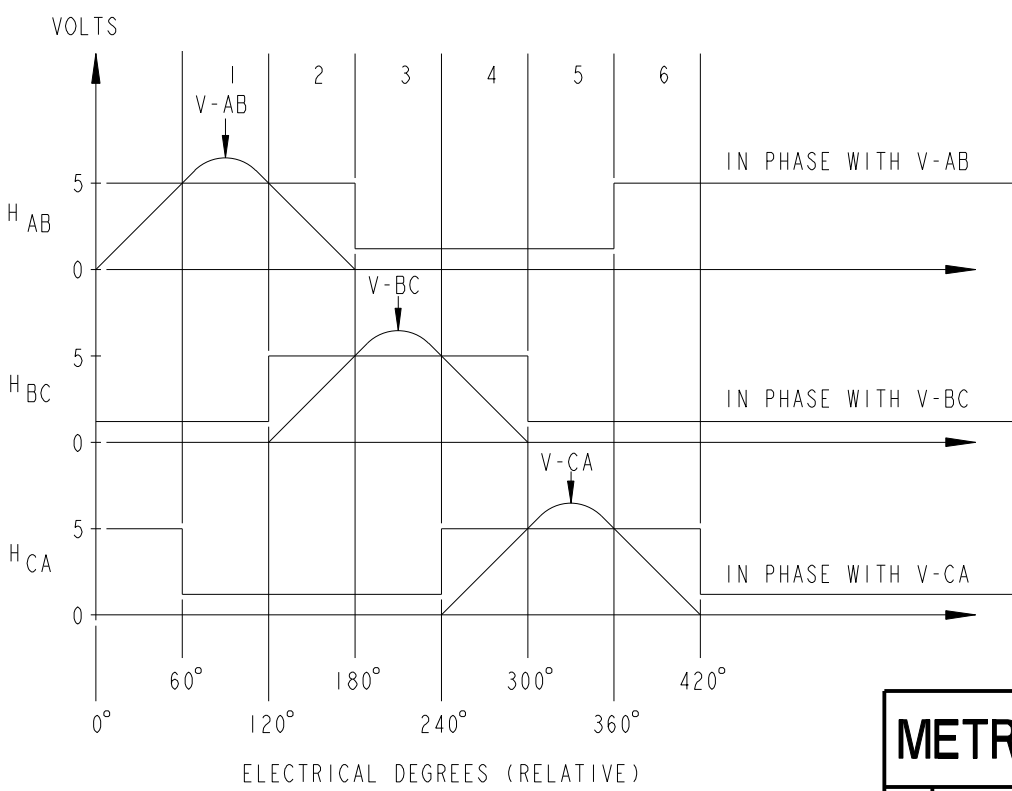
MODEL NUMBER	ARMATURE & SENSOR ASSY.	FIELD ASSY.	"A" DIM.	"B" DIM.
TBMS-7615	961003/015	961005/015	14.99-15.49 [1.590-1.610]	19.30 [1.760]
TBMS-7631	961003/031	961005/031	30.48-30.99 [1.200-1.220]	34.80 [1.370]
TBMS-7646	961003/046	961005/046	45.97-46.48 [1.810-1.830]	50.29 [1.980]

STEP	RED	WHITE	BLACK
1	+	-	-
2	+	-	-
3	-	+	-
4	-	+	-
5	-	-	+
6	-	-	+

EXCITATION SEQUENCE TABLE



SENSOR WIRING DIAGRAM



METRIC DRAWING	
▼	SIGNIFICANT PRODUCT CHARACTERISTIC
◆	CRITICAL PRODUCT CHARACTERISTIC

3	AR	1M-2709	MARKING PROCEDURE
2	1	SEE TABLE	FIELD ASSEMBLY
1	1	SEE TABLE	ARMATURE AND SENSOR ASSEMBLY
ITEM	QTY	IDENTIFYING NO.	DESCRIPTION
LIST OF PARTS			
UNLESS OTHERWISE SPECIFIED: REMOVE ALL SHARP BURRS AND BREAK ALL SHARP EDGES XX DECIMAL PLACES ±.4 [1.015] XX DECIMAL PLACES ±.13 [1.005] ANGULAR DIMENSIONS ±1°			KOLLMORGEN
DO NOT SCALE DRAWING; USE DIMENSIONS ONLY ALL DIMENSIONS ARE IN MILLIMETERS DIMENSIONS IN BRACKETS [ ] ARE IN INCHES AND ARE FOR REFERENCE ONLY INTERPRET GEOMETRIC SYMBOLS PER ANSI Y14.5M-1992			501 MAIN STREET RADFORD, VIRGINIA 24141
FSCW 11384			OUTLINE TBMS-76XX-X00
SIZE D			DWG. NO. 961006
SCALE: 2:1			REV -
JOB NO.:			SHEET 1 OF 1



ATTENTION  
Static-Sensitive  
Devices  
Handle Only at  
Static-Safe  
Workstations

THIS DOCUMENT IS  
ONLY FOR USE BY  
THE INTENDED  
RECIPIENT AND  
CONTAINS  
KOLLMORGEN  
CONFIDENTIAL  
INFORMATION

Pro/E Instance Name	TBMS-76XX-961006
Pro/E Drawing Name	961006
Pro/E Model Type	ASSEM
Pro/Engineer Drawing	